



Protect What Matters Most™

GPS TRACKING



VEHICLE SECURITY
FAMILY SAFETY
TRIP SHARING
& MORE



Defining

Safety for you and your loved ones
Security for your vehicle
Tracking made easy

Never before has consumer-ready tracking technology existed. Hollywood has promised it for decades. But now it exists and you can hold it in the palm of your hand.

Meet GPS Snitch. The first and only consumer GPS solution that was built from the ground up for consumers.

You don't need a Ph.D. in rocket science or any special knowledge to use it. It works. And we've thought of everything.

Just turn it on and track it when you want. GPS Snitch is there for you, to serve and protect what is important to you.



Press here to turn me on.



All in One

No one wants to mess with cables and separate pieces. That's why GPS Snitch is all in one.



Small

The size of a mobile phone makes Snitch easy to take with you and hide.

Track in real-time via our Web site or from your mobile phone using text message. GPS Snitch responds in seconds, telling you where it is.

Track it any time you want. Its location is at your fingertips.



Track Anytime

GPS Snitch is there when you need it, silently waiting for your tracking requests.

Who, when, and where? These are questions that we often have through the day. Each of them change depending on the circumstance.

GPS Snitch is an effective tool that gives you the answer to these questions and a chance to influence the situation.



Interactive Map

GPS Snitch's online Web account includes a convenient, interactive map.

And more importantly, you have complete control of the system and do not have to call someone to get a location like some other solutions.

And my wireless antenna.



Here's my GPS antenna.

Tracking

Anytime, anywhere
Always on and ready
Dependability

Security

Stealthy and silent
Effective protection
Peace of mind

What does your vehicle's location mean to you? What if your vehicle is not where you parked it? A silent informant, GPS Snitch comes to the rescue.

No one cares about your vehicle's security more than you. GPS Snitch's portability and state-of-the-art technology allows you to hide GPS Snitch within your vehicle while ensuring high performance. Be creative. No installation required. No installation nightmare.



No Install

No install hassle, no extra cost, and no troubleshooting. No problem.

Stay in touch with your vehicle. GPS Snitch silently alerts you when something threatens its security, via text message to your mobile phone and e-mail.



Press here to arm me.



Motion Sensitive

Motion sensing like a conventional alarm. But GPS Snitch informs you silently

If your vehicle leaves the scene without you, work with authorities to recover it by tracking in real-time.



UltimateSense™

UltimateSense™ GPS tracking technology enables you to hide GPS Snitch anywhere in a vehicle. And find its location in seconds.

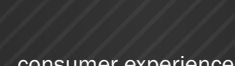
Lifestyle

Sleek and stylish
Stay connected
On the go



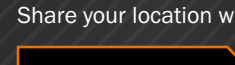
Friend Sharing

Share your GPS Snitch to friends, family, and co-workers. Monitor the location of elderly grandparents, family on a road-trip, and much more.



Schedule

Schedule locations when it's not convenient for you to be there to request them yourself. Monitor your teen after you go to bed.



History

When you request or schedule locations, they are added to your GPS Snitch event history for later viewing.

We understand busy lifestyles. We engineered a system that improves the efficiency of family life, degree of connectedness, the quality of care and safety of loved ones, and interaction between coworkers.

GPS Snitch is as much about delivering a

satisfying consumer experience and social networking as it is about delivering effective security and tracking.

Share your location with family, friends, and co-workers.

Monitor a young driver, check out where your friends are hanging out, or track a family member during a road trip.



Charge me here.





What Can You Do?

Secure your vehicle. Track whenever you want. Share your location with friends, family, coworkers. Track your grandparents and make sure that they are travelling safely. Monitor your teen at night. Check to see if your spouse has left work. See where your friends are at night so that you can join them.

Battery

We embedded a large rechargeable battery within GPS Snitch to give you the flexibility you need. One week of operation on a single charge.

Mobile Alerts

Instead of a siren, GPS Snitch sends security alerts thru text message and e-mail. Get them instantly and silently.

Make your Snitch invisible if you don't want to be tracked. Schedule locations so that you don't have to be in front of your computer to track. Zoom in and out, and pan around the map. See satellite imagery plus street information at the same time. Monitor the speed every time that you track. And more!

www.gps-snitch.com

Sales inquiry or question?

Don't hesitate to contact us: sales@gps-snitch.com

Dealer stamp



More Than Vehicles

Keep Track of Anything Keep it Secure

There are many uses of GPS Snitch. We're sure our customers will continue to find new ways of using this groundbreaking solution.

- Motorcycles**
Secure your motorcycle - hide in a locked compartment.
- Cars**
Secure your car - hide virtually anywhere inside
- Recreational Vehicles**
Share travels with friends and family. Secure your RV.
- All-terrain Vehicles**
Secure your ATV - hide in a locked compartment.
- Briefcases and Backpacks**
Protect your bag, briefcase, and more.
- Work Trucks & Tool Boxes**
Secure your materials, tools, and more.
- Trailers**
Secure your boat, camper, or fifth-wheel.
- Golf Clubs**
Secure your golf bag at tournaments!
- What Matters Most to You?**
We all have things that we want to protect.



This is my motion sensor.

Easy to Use

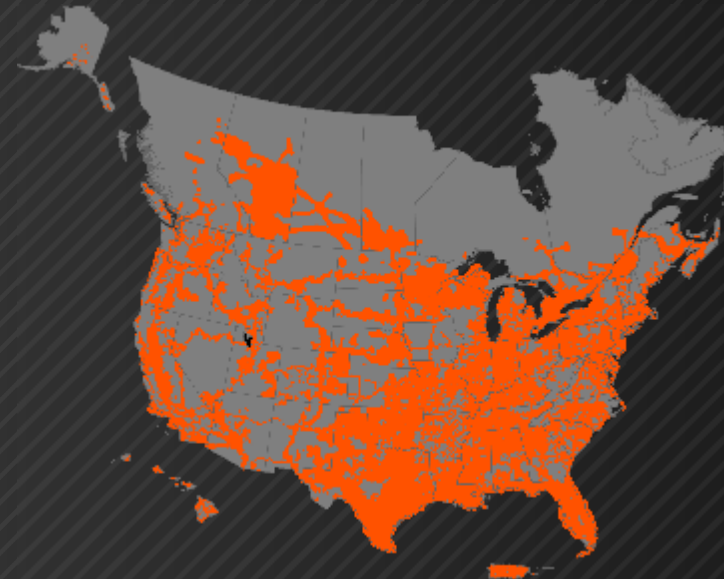
We designed GPS Snitch's online interface so that even grandparents can use it.

Coverage

95% Population Coverage Canada and United States

GPS satellites transmit signals everywhere on Earth but are not able to receive signals from GPS devices. We designed wireless communications technology into GPS Snitch so you can interact with GPS Snitch remotely, from the Internet or your mobile phone.

The GPS Snitch service boasts 95% population coverage in the United States and Canada by leveraging the networks of leading wireless carriers.



GPS Snitch requires a monthly or annual rate plan and activation fee. For pricing and rate plan information, visit:

www.gps-snitch.com

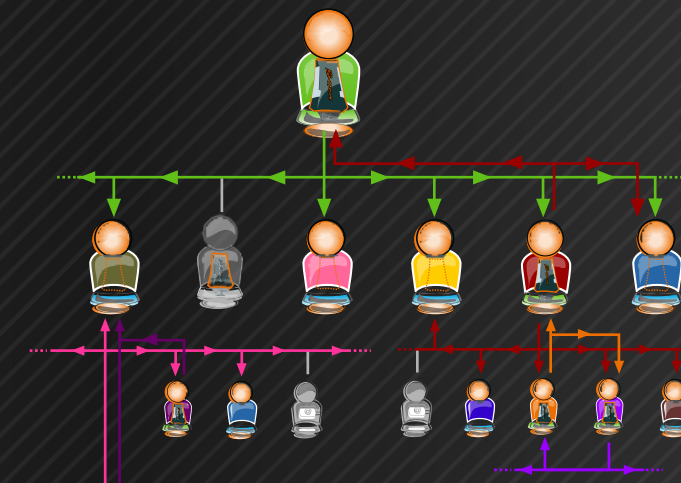
Sharing

Interact When You Want Don't when you Don't

Stay connected with your friends, family, co-workers with GPS Snitch. Inviting your friends, family, and coworkers to track your Snitch is easy. Simply log into your Web account, enter their e-mail address into the Sharing form and press Send.

You control the permissions of your Snitch Friends and their ability to interact with your GPS Snitch. Similar to on-line instant messaging applications, you can make your GPS Snitch invisible when you want, and change it back to visible so your Snitch Friends can track you.

Share your GPS Snitch when you travel so that friends and family can share in your experience. Or share the location of company vehicles within a team to improve efficiency. You can share your GPS Snitch for many reasons. We give you the tools and you choose how to use them.



I track you, you track me.

GPS Snitch Owner:
Can track own GPS Snitch, share to friends, and track shared GPS Snitches.

GPS Snitch Friend:
Can track shared GPS Snitches and purchase own GPS Snitch!

Pending GPS Snitch Friend:
This friend has been sent a sharing invitation and has not yet accepted.

More

Easy Interaction On Demand

Interaction with your GPS Snitch is super easy. Simply log into your Web account, choose a GPS Snitch that you want to track - one of your own or a friend's. Press the Locate button and the current location of your GPS Snitch is automatically retrieved in seconds.

Not always in front of your computer? No problem. We designed functionality that enables you to interact with your GPS Snitch using any text-message (SMS)-capable mobile phone. Simply send a text message to our server with a unique password and command. GPS Snitch responds to your command including remote locations, arming and disarming, and more.

If you have a compatible BlackBerry® smartphone, download BlackLine's free Blip BlackBerry application for easy interaction.

Plus, if your BlackBerry smartphone incorporates built-in GPS technology, you can activate it within your account. Sharing your BlackBerry location connects you more efficiently to the people you know. Share Your Where™!

For more information, visit:

www.blacklinegps.com



Remote Control

Instead of a siren, GPS Snitch sends security alerts thru text message. Control GPS Snitch by sending a text message.



Here I am. Where are you?

