

TTEP115 | Travelmount® Windshield or Dash Mount for TomTom® EasyPort™



Package Contents:

- (1) GN014-SBH - Mini Windshield suction or dash mount
- (1) APTTEP - Dual-T to TomTom EasyPort adapter plate
- (1) AP013 - Adhesive circular disc
- (1) Alcohol cleaning pad

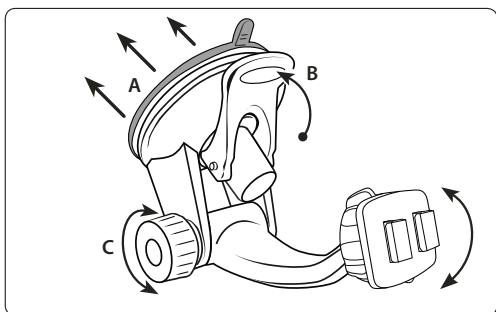
Compatible with:

- TomTom ONE** 125, 125-SE, ONE 130, ONE 130-S, 140, ONE 140-S
- TomTom XL** 325, XL 325-S, XL 325-SE, XL 330, XL 330-S, XL 335 Series, XL 340, XL 340-S, XL 340 LIVE Series, XL 350 Series
- TomTom XXL** 530-S, XXL 535-T, XXL 540-S/WTE, XXL 550 Series
- TomTom PRO** 4000, TomTom PRO 8000
- TomTom ONE 22**, ONE 22 Europe, ONE Europe 22 Assist, TomTom ONE Regional, ONE Regional Assist
- TomTom Europe 22**, XL Regional Assist, XL Europe 22 Traffic,
- TomTom XL Regional**, XL Regional Traffic

TomTom, ONE, GO, and EasyPort, Start and Ease are product names, trademarks, or registered trademarks of TomTom International b.v. Arkon Resources, Inc. is not affiliated with TomTom International b.v.

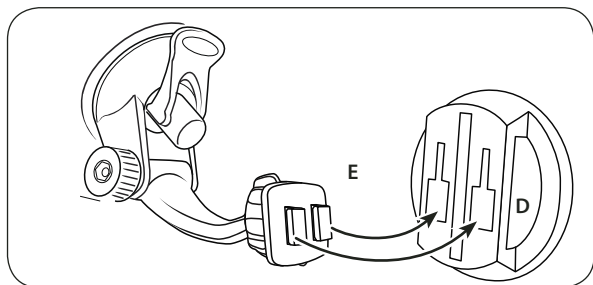
Windshield Mounting

- Step 1. Find a safe location on the interior of the vehicle's windshield to mount the pedestal. Firmly push the suction base (A) against the windshield and flip the base lever down (B) to the locked position. See diagram below.
- Step 2. Adjust the angle of the pedestal arm by tightening the angle adjustment knob (C) at the base to the desired angle.



TomTom EasyPort Adapter Plate Installation

- Step 1. Connect the dual T-slots (D) on adapter plate to the dual T-tabs (E) on the pedestal head. Adjust the angle of the head by tightening the head adjustment knob (F).



! Do not place mount in or near an air bag deployment zone or where it will obstruct view of the road.

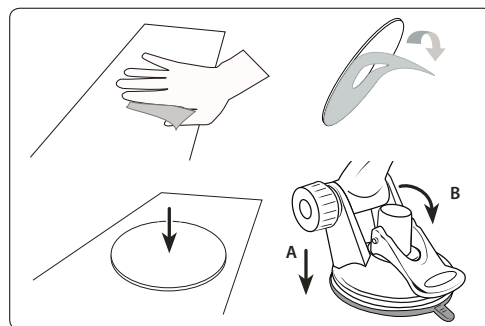
! Safety Precautions

Do not install Arkon products over an air bag cover or within the air bag deployment zone. Arkon Resources, Inc. assumes no responsibility of liability for injury or death as a result of car crashes and/or air bag deployment.

Arkon is not responsible for any damages caused to your car, your device, or yourself due to the installation or use of this pedestal mount.

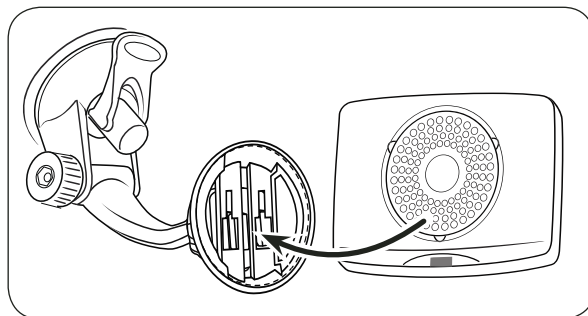
Dash or Console Mounting (Optional)

- Step 1. Find a safe location on the dash or console. Use the included alcohol pad to clean the mounting surface if necessary. Remove the paper backing on the adhesive disc and firmly press in place.
- Step 2. Place the pedestal's suction base (A) over the center of the circular disc. While firmly holding the pedestal on top of the disc, flip the base lever down (B) to the locked position.



TomTom EasyPort Device Insertion

- Step 1. While holding the mounted adapter plate, gently insert the device (not included, sold separately) into the adapter plate until an audible click is heard. The device can then be rotated into the desired viewing angle.



ARKON
RESOURCES INC.

The Mobile Mounting Specialists™

Consumer Hotline:

USA (800) 841-0884

INT'L (626) 254-9005

Monday - Friday 9am - 5pm, PST

www.arkon.com

Arcadia, CA 91006 USA

Designed in USA | Made in China

© Copyright 2010 Arkon Resources, Inc.