

Installation of USB to Serial Converter under Windows 2000

WARNING:

You must install the USB to Serial Converter software **BEFORE** connecting it to your computer.

◆ Software Installation

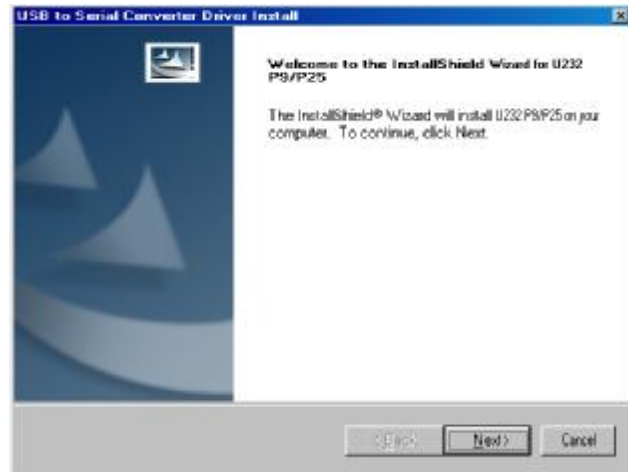
Step 1.

- 1) Please insert the driver CD into the CD-ROM. Setup will begin automatically.
- 2) Choose setup language.
- 3) Click “**OK**” to continue.



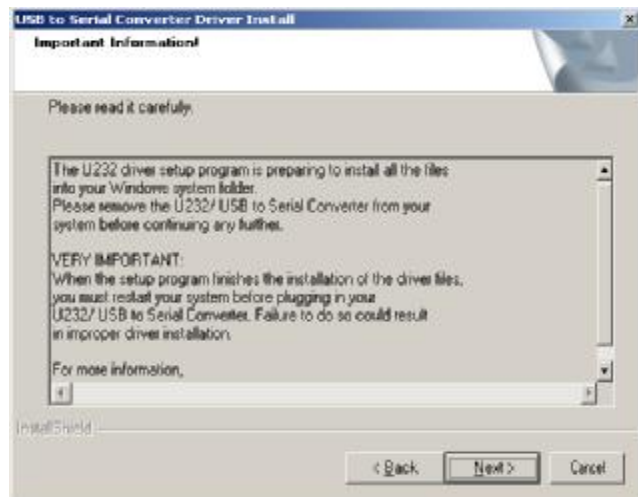
Step 2.

Click “**Next**” to continue.



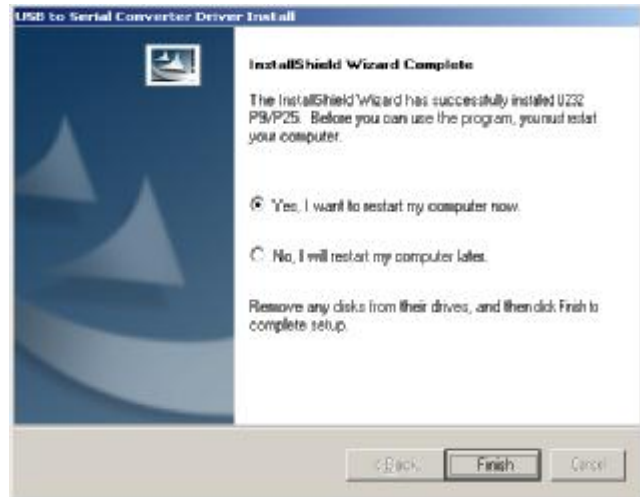
Step 3.

Click “**Next**” to continue.



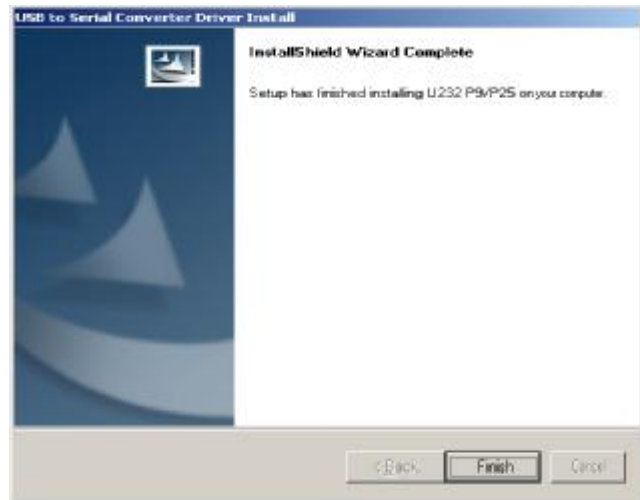
Step 4.

- 1) Select **“Yes, I want to restart my computer.”**
- 2) Click **“Next”** to continue.



Step 5.

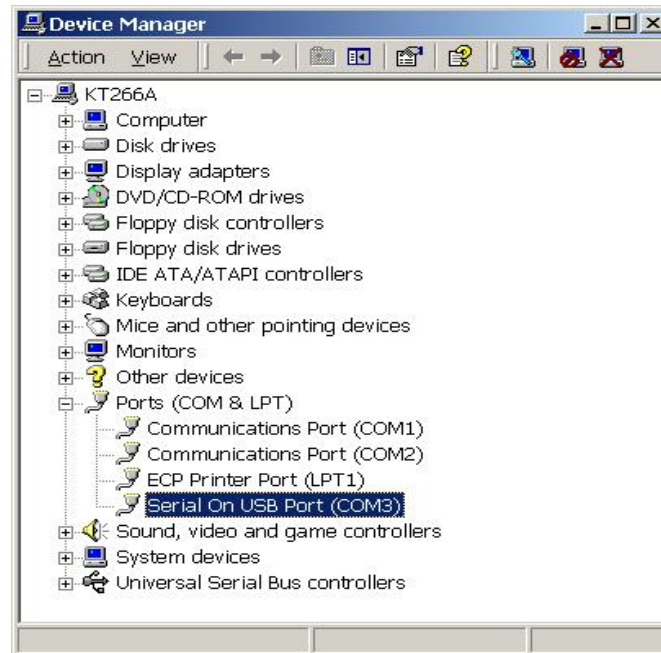
Click **“Finish”** to complete setup.



Congratulations!! You have finished installing the USB to Serial Converter.

◆ Verifying devices are installed successfully

1. Please move the cursor to **“My computer”**. Click the mouse right button. It will show a dialog, then click **“Properties”** → **”Hardware”** → **“Device Manager”**. Double click **“Ports [COM & LPT]”**, it will show a new direction **“Serial on USB (COM3)”**

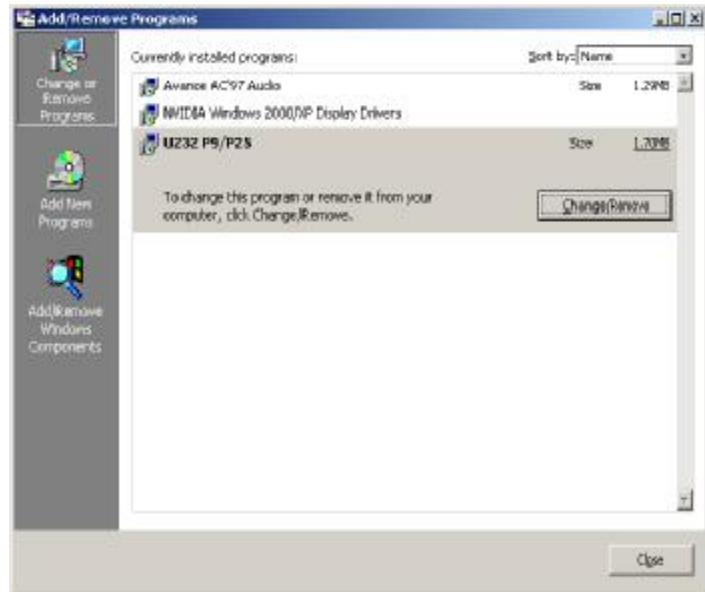


◆ Un-installation

If you want to remove the USB to Serial Converter driver, please click “**Start**” → “**Settings**” → “**Control Panel**” → “**Add/Remove Programs**”, then follow the procedure:

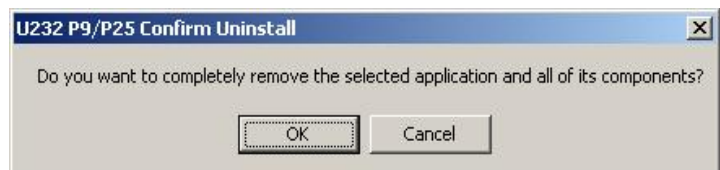
Step 1.

Select “**U232 P9/P25**” then click “**Change/Remove...**” to continue.



Step 2.

Click “**OK**” to continue.



Step 3.

Click “**Finish**” to restart your computer and complete removing the USB to Serial Converter driver.

