

# Installation of USB to Serial Converter under Windows Me

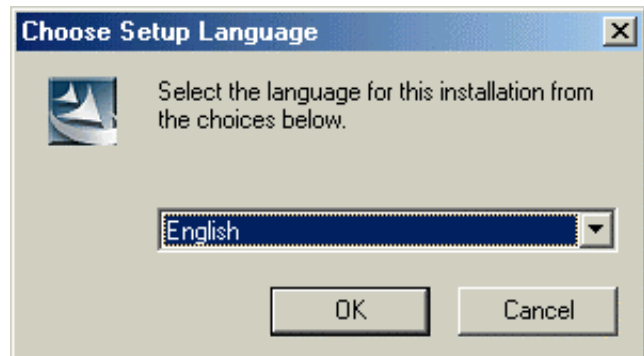
## WARNING:

You must install the USB to Serial Converter software **BEFORE** connecting it to your computer.

## ◆ Software Installation

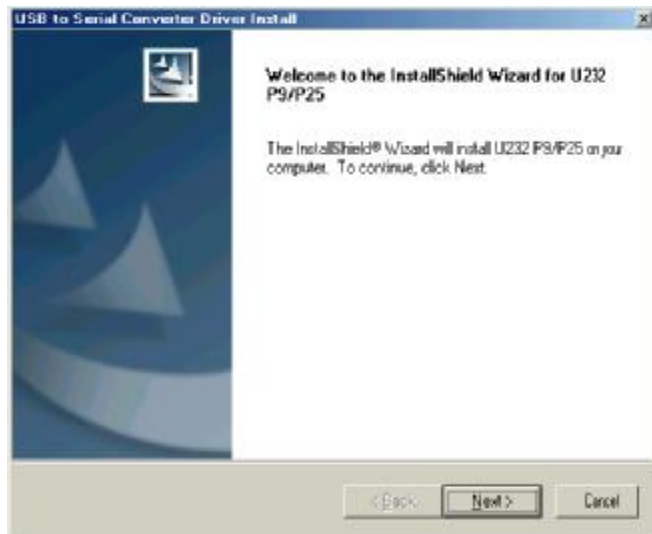
### Step 1.

- 1) Please insert the driver CD into the CD-ROM. Setup will begin automatically.
- 2) Choose setup language.
- 3) Click “**OK**” to continue.



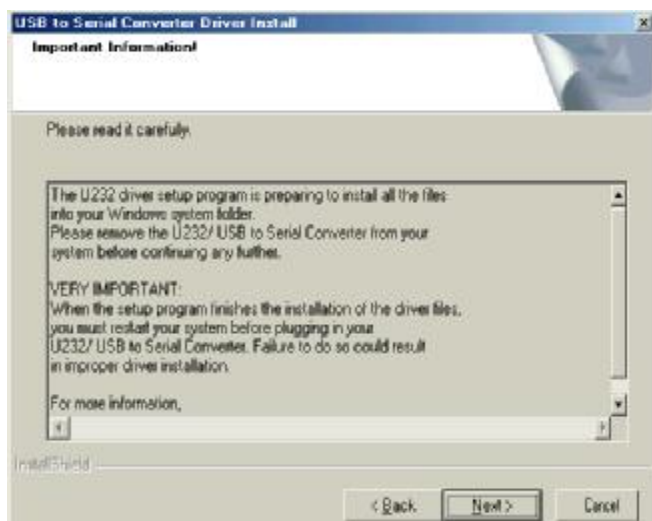
### Step 2.

Click “**Next**” to continue.



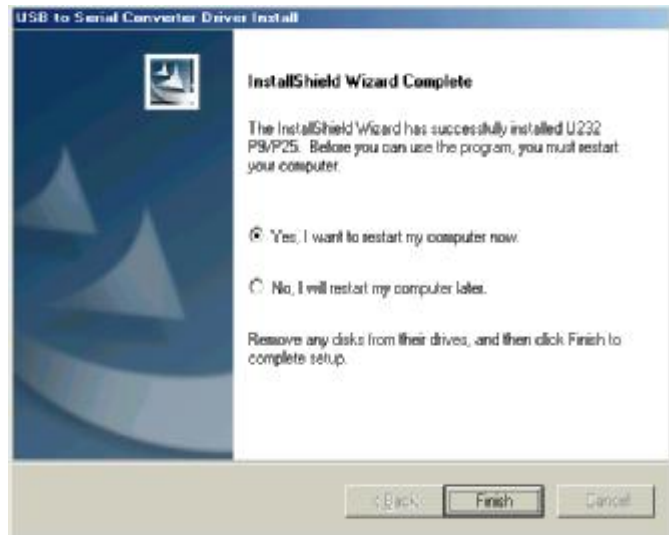
### Step 3.

Click “**Next**” to continue.



**Step 4.**

- 1) Select **“Yes, I want to restart my computer.”**
- 2) Click **“Next”** to continue.



**Step 5.**

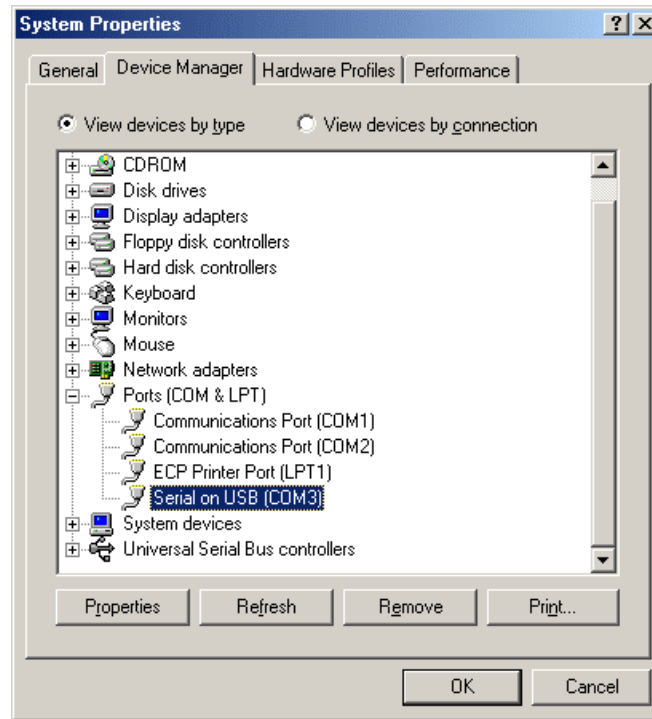
Click **“Finish”** to complete setup.



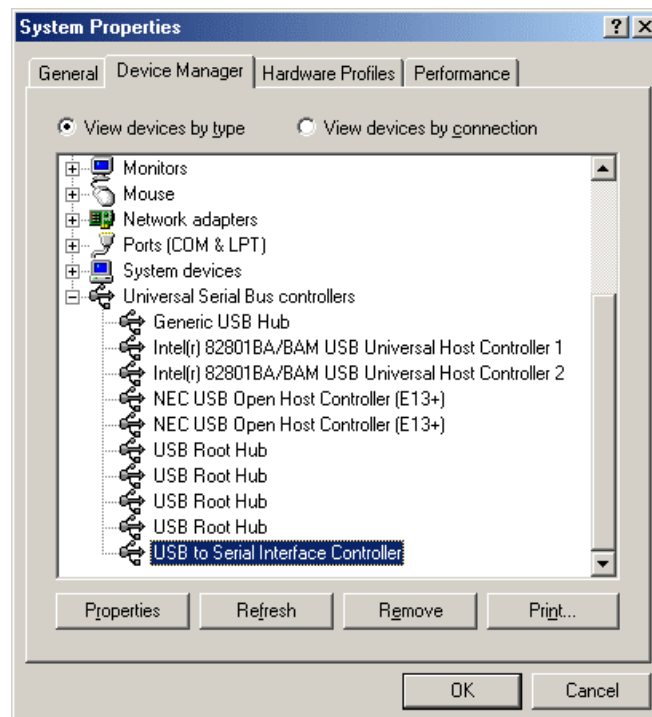
**Congratulations!! You have finished installing the USB to Serial Converter.**

## ◆ Verifying devices are installed successfully

1. Please move the cursor to **“My computer”**. Click the mouse right button. It will show a dialog, then click **“Properties”**→**“Device Manager”**. Double click **“Ports [COM & LPT]”**, it will show a new direction **“Serial on USB [COM3]”**



2. Under the same window, double click **“Universal Serial Bus controller”**, it will show a new direction **“USB to Serial Interface Controller”**.

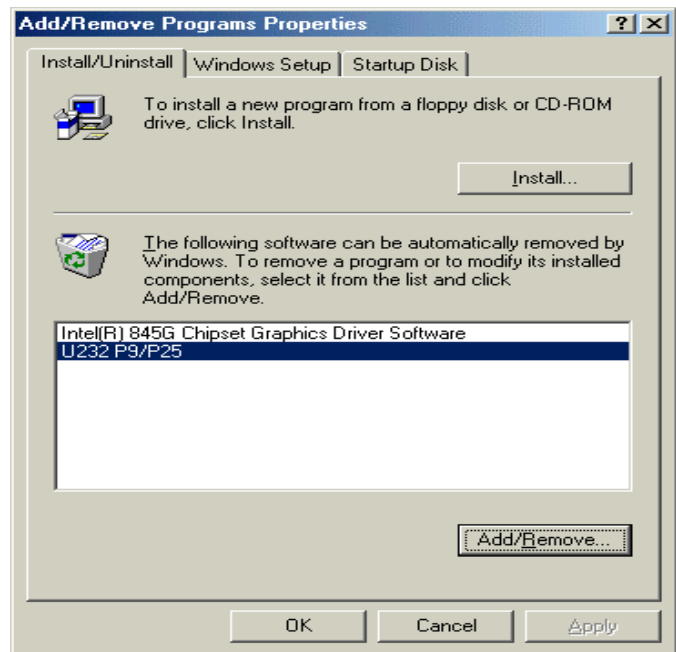


## ◆ Un-installation

If you want to remove the USB to Serial Converter driver, please click **“Start”** → **“Settings”** → **“Control Panel”** → **“Add/Remove Programs”** → **“Install/Uninstall”**, then follow the procedure:

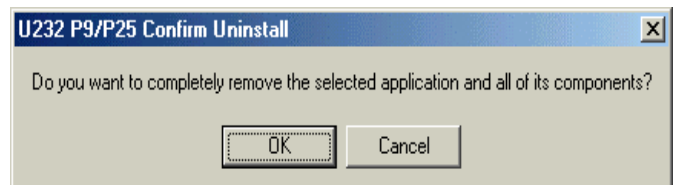
### Step 1.

Select **“U232 P9/P25”** then click **“Add/Remove...”** to continue.



### Step 2.

Click **“OK”** to continue.



### Step 3.

Click **“Finish”** to restart your computer and complete removing the USB to Serial Converter driver.

